

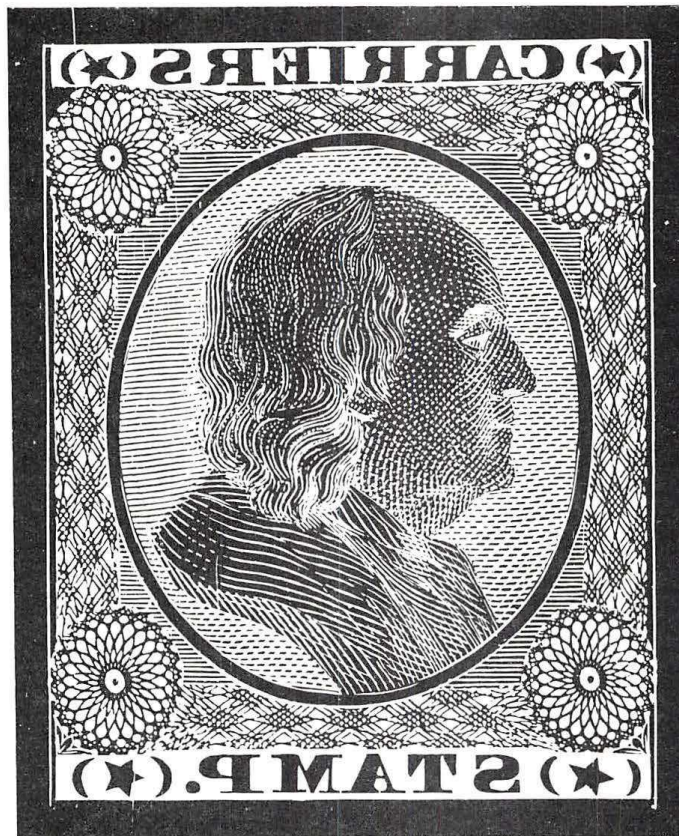
APRIL 1996

WHOLE #22

VOL. 6 NO. 2

THE PENNY POST

Official Journal Of The Carriers And Locals Society

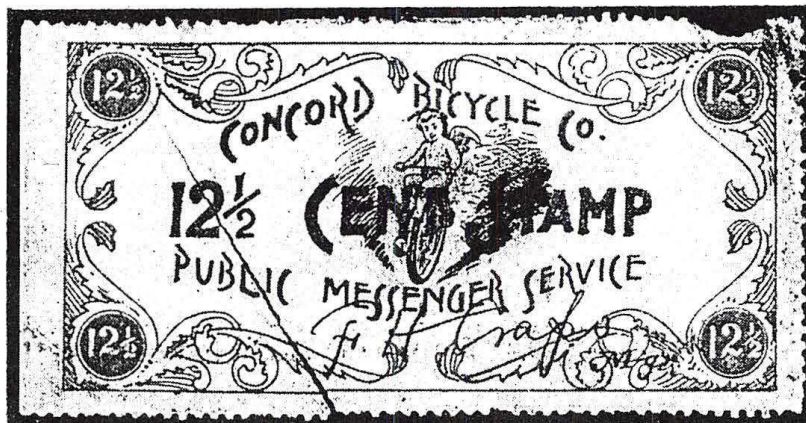


Roosevelt Album Franklin carrier die.

INSIDE THIS ISSUE

THE OFFICIAL CARRIER STAMP DIES
DR. MITCHELL AND HIS STAMP JOURNALS
BOUTONS AND SWARTS DISCOVERIES
N.Y. PENNY POST FOLLOWUP
ATTEMPTS TO PREPAY CARRIER DELIVERY
MERCANTILE LIBRARY STAMPS FROM PHILLY?

LETTERS TO THE EDITOR



The latest copy of the bicycle stamp to ride into sight.

19 February 1996

Dear Gordon;

I thought you might be interested to learn of a NINTH copy of the Frank H. Crapo Concord Bicycle Company stamp (*Penny Post*, April 1994).

(See the photo above).

The stamp is an orangish-rose. The diagonal break down from the upper left "12 1/2" corner does indeed almost bi-sect the stamp. The upper right corner area has a thin resulting in a piece missing. Part of an old mount shows at the top center. Overall appearance is a bit "scruffy" indicating the stamp was probably "used".

I have not yet decided what to do with the stamp and any advice is welcome, especially regarding professional repair.

I know the item is "rare" and I also know that the value will be in the eyes of the beholder who has longed to have a copy.

The stamp is for sale and several options of disposal will be considered.

Many regards,

Don G. Reuter
The 1871 Shop
PO Box 190
South Lyon, MI 48178

Editor's Note: The deplorable condition of each subsequent copy discovered argues for a rough package use of the stamp and helps

explain why none have ever been found properly affixed to covers. - G.S.

...

Feb. 7, 1996

Dear Mr. Stimmell
Re Phoney Express

I have just seen the note under this title in Volume 6 page 27, January 1996, referring to the "Paris essay" of 1900.

The article by L.N. Williams in *Linn's Stamp News* of 1987 is based on his earlier article "Alfred Bagnet, Engraver, Printer, Forger; Crete and Newfoundland "Essays", *Stamps and Foreign Stamps*, [UK], April 1986.

This splendid article hinges on the discovery of two small sheets (6 x 2) of these designs in the Campbell-Johnston Collection at the British Library, Philatelic Collections. These are the only recorded sheets showing the Crete and Newfoundland designs in the same sheet.

PS: Thanks for your continued support in sending the *Penny Post* and Indexes.

Yours sincerely,

D R Beech
Head of the Philatelic Collections
The British Library
Great Russell Street
London WC1B 3DG
England