

JANUARY 1997

WHOLE NUMBER 25

VOL. 7 NO. 1

THE PENNY POST

Official Journal Of The Carriers And Locals Society



Rare green Floyd stamp tied by the final handstamp on Nov. 2-4, 1862 cover.

INSIDE THIS ISSUE

EXPLORING ENIGMAS IN FLOYD'S PENNY POST

SPENCE & BROWN'S PHILADELPHIA

ROBISON & CO., BROOKLYN

THE EAGLE SMALL CARRIER DIE PROOF

A BLOOD'S OFFICE IN BALTIMORE AND WASHINGTON?

THE PENNY POST



VOL. 7 NO. 1

JANUARY 1997

(C) 1997, The Carriers And Locals Society
APS Affiliate 211

Official Journal Of The Carriers And Locals Society

Published quarterly in January, April, July and October.
Price per issue: \$6.50 for members, \$8.50 for non members.

CONTENTS

The Mysterious World of Locals, by Gordon Stimmell.....	Pages 2-3
Exploring Enigmas in Floyd's Penny Post, by Gordon Stimmell.....	Pages 4-9
The Eagle Small Carrier Die Proof, by Donald B. Johnstone.....	Page 9
Did Blood's Penny Post Maintain Branch Offices in Baltimore and Washington, DC? by Steven M. Roth.....	Pages 10-17
Spence & Browns, Philadelphia, PA, by Larry Lyons.....	Pages 18-22
Robison & Co. Brooklyn, NY, by Larry Lyons.....	Pages 23-25
The Unkindest Cut, by Gordon Stimmell.....	Pages 26-27

OFFICERS OF THE SOCIETY

Editor: Gordon Stimmell.....P.O. Box 184, 260 Adelaide St. E., Toronto, Canada
President: Steven Roth.....P.O. Box 57160, Washington, DC 20037
Vice-President: Robert B. Meyersburg.....6321 Tone Ct. Bethesda MD 20817-5812
Secretary/Treasurer: Martin Richardson.....Box 1574, Dayton, OH 45401
Publicity Officer: Lawrence LeBel..40-2A Woodsedge Dr., Newington CT 06111-4281

DIRECTORS

Richard Friedberg, Helen Galatan-Stone, Robert B. Meyersburg
Donald Johnstone, Thomas C. Mazza, Martin Richardson,
Steven Roth, Byron Sandfield, Richard Schwartz, Gordon Stimmell.

AWARDS

1994 The Diane D. Boehret Award For Excellence In Philatelic Literature
1994 Stampshow Pittsburgh.....Vermeil
1994 Sescal California.....Vermeil
1993 Stampshow Houston.....Gold
1993 Canada's 2nd Philatelic Literature Exhibition.....Silver
1992 Sescal California.....Vermeil
1992 PHILITEX New York.....Large Silver

THE MYSTERIOUS WORLD OF LOCALS

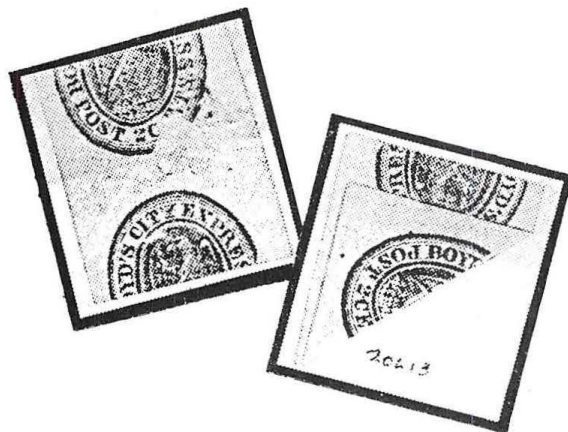
Richard Schwartz, in the aftermath of the recent discussion of locals printed on both sides (Vol. 6 No. 3) submits another Boyd 20L13 to confirm John D. Bowman's article. The stamp is shown here with two partial designs on reverse and also frontally folded over, revealing one full design on the other side. Perhaps this should indeed be listed in the *Scott Specialized*, even though the possibility exists it is printer's waste.

Dick also has included a second local printed on both sides, an imperforate Douglas City Despatch 59L2. The color on the reverse design (which is shifted slightly lower than the front side) is a bit paler but both shades match blues found on original perforated examples. The paper, however, is a bit stiffer and slightly thicker than most perforated copies, so perhaps this is indeed printer's waste. It is far rarer as an imperforate than the commonplace imperforate 59L3s and 59L6s. I have only noted a few other 59L2 imperforates, and only one 59L1 imperforate, which I saw in the British Library Tapling Collection. I did not, however, examine the backs of the Tapling copies for double printing. The imperforate blue is listed in Scott, (59L2a), the imperforate pink is not. Scott also lists the printed on both sides variety (59L2b) without price. Thanks to Dick Schwartz, we now have confirmation that this variety is not a figment of some ancient local guru's imagination. —G.S.

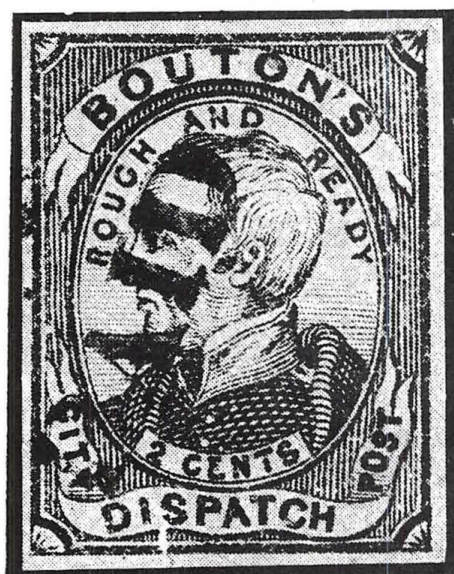
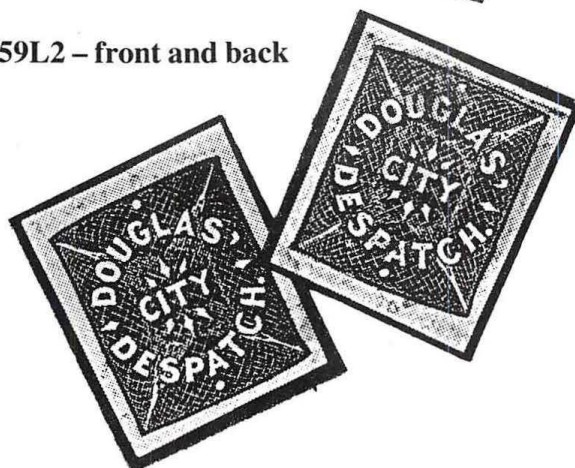
An intriguing, and perhaps unrecorded, East River postmark has also been sent in by Richard Schwartz with these words: "As prepaid postal stationery the East River marking probably was experimental and short lived. The fact the marking appears on paper of different color suggests it."

Two examples are shown. The cut round copy is a blue handstamp on blue grey laid paper. There is a black overlay of another unidentified oval handstamp.

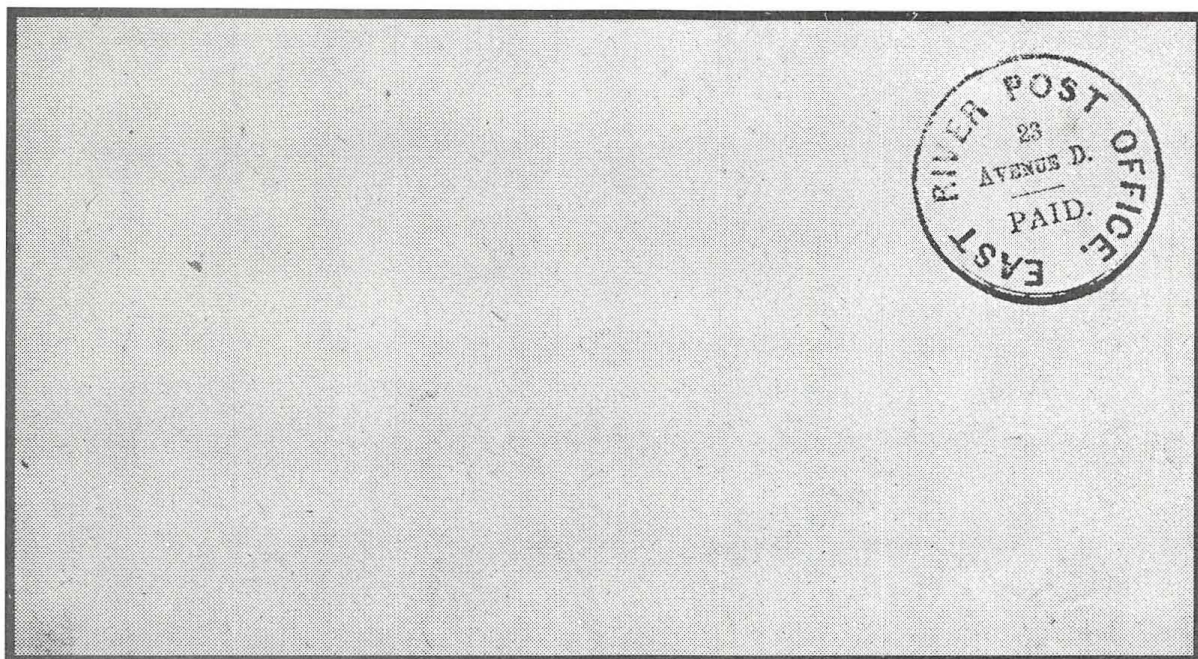
20L13 – front and back



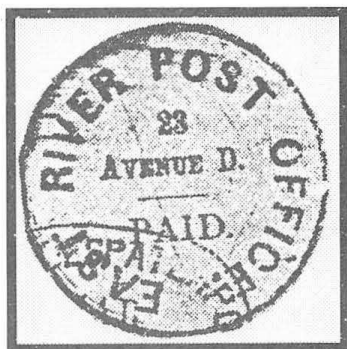
59L2 – front and back



Green Boutons in the Tapling collection, from British Library.



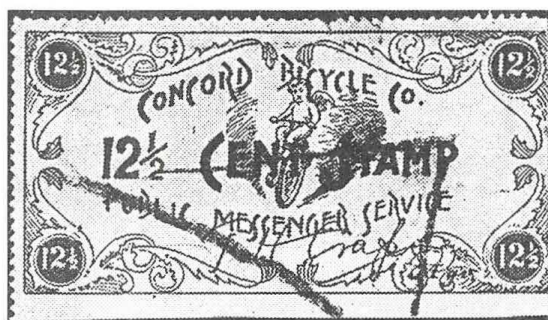
Black East River P.O. handstamp on buff pre-printed postal stationery.



Blue East River handstamp with black unknown "DESPATCH PO" oval overlying it.

The East River handstamp on cover was described by Elliott Perry as "black pmk on buff envelope. Steele". Steele, according to Schwartz, was a "serious collector for whom Perry had high regard". The cover sold as lot 224 in Bob Kaufmann's 11/14/72 auction for \$80. The lot description refers to another cover, used, of which I have no record. Perhaps it lies in the treasure chest of one of our Society members who can shed more light on this East River mystery.

Also shown is the Tapling green Bou-
tons courtesy of the British Library. It took two mailings and five months for this photo to arrive. This really makes one wax nostalgic for the glorious days of speedy trans-Atlantic clipper ships.



Yet another copy of the Concord, N.H. bicycle stamp has surfaced. Bruce H. Mosher, a back-of-the-book specialist, purchased it at STAMPSHOW in Orlando, Florida. It makes the 10th copy recorded so far.

Bruce says it is vertically perforated 11.4 along its left side and top. There is no evidence of a watermark. The stamp is cancelled by "a large, roughly triangular pattern of orange-brown brushed ink or possibly crayon residue", Bruce reports. The stamp has two small tears in the top and is cut roughly at right and below.

In my opinion, this crayon style marking may be further evidence of a package delivery use of the stamp. Such broad strokes would not have been necessary for usage on a small envelope. F.H. Crapo began business linked to his merchant dad's millinery and ladies' apparel store and may have made bicycle deliveries for that family concern.